

SKERP

A Mildly Classic project



WHO IS **MILDLY CLASSIC**

Mildly Classic specialises in building well thought out, reliable and easy to use ERP solutions, IOS and Android apps as well as front end and back end E-commerce solutions .

Index

- 01 Introduction..... 04
- 02 SKERP Needed 05
- 03 Key Challenges 06
- 04 Our Solution 07
- 05 We Created..... 08
- 06 Outcome 09

SKERP IS..

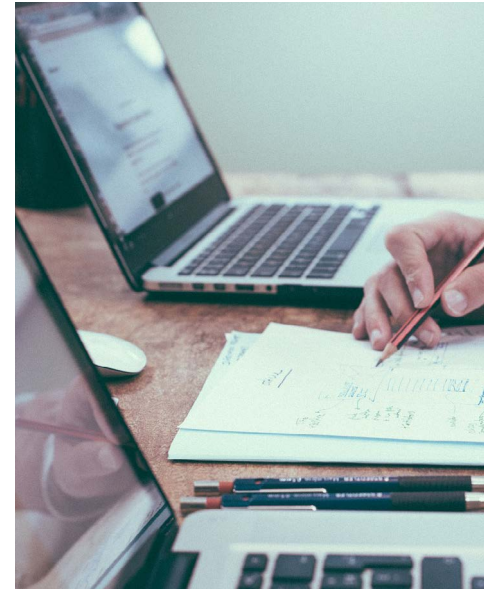
SKERP is the software that manages the entire enterprise ecosystem of the leaders in India for export of natural stones

SK Group is one of the market leaders in India for export of natural stones. Equipped with a different approach and strategy, coping with customer expectations in terms of quality, price & timely delivery along with personalized interaction they aim to be the top natural stone export company from India



SKERP NEEDED...

- One stop solution for digitalizing their entire enterprise ecosystem.
- To digitally organize their activities from regional stone queries to production to multinational exports on one Software
- Scalable and long term.

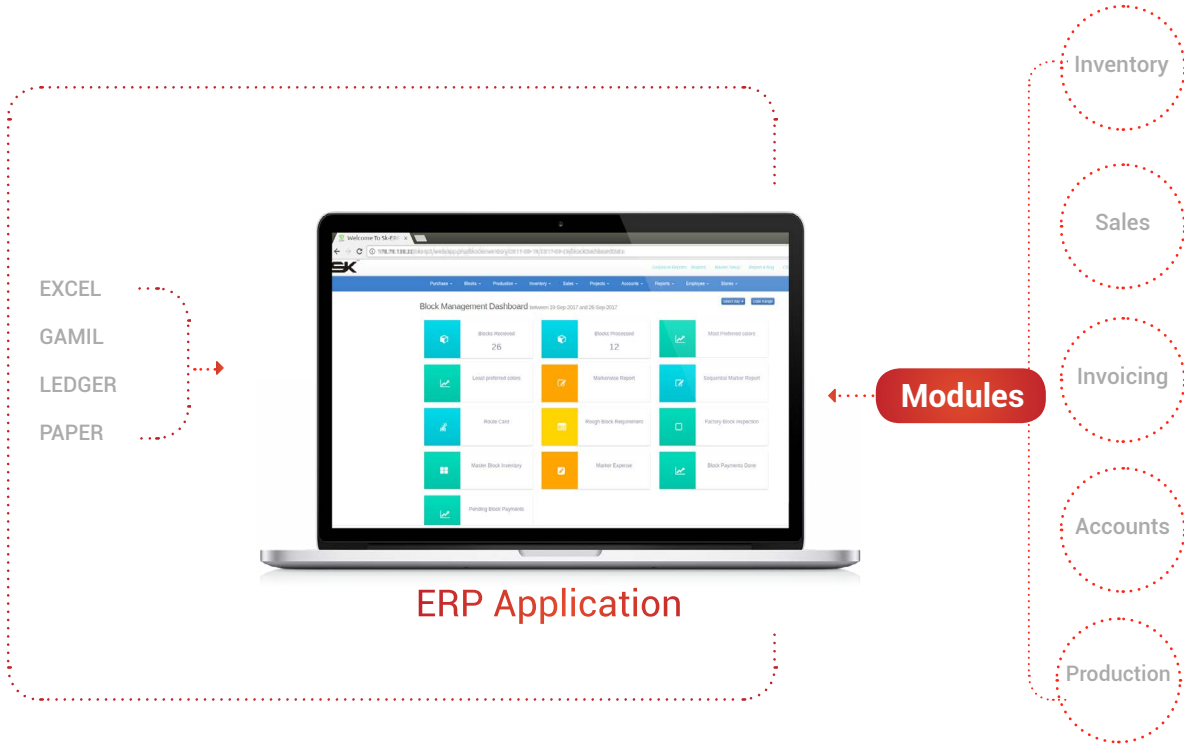


KEY CHALLENGES...

- All relevant order data needed to be done was maintained in ledgers or books.
- Keeping track of ordered blocks of stone by them and following up with the blocks that were received by the factory was challenging.
- There was no proper track of the production line.
- Managing the stores inventory, employee management, attendance and payroll with excel sheet was very tedious.
- Generating the invoices, quotation, sales orders for the multinational export business were done manually.



OUR SOLUTION...



WE CREATED...

- Web Application
- Alerts, Requests, Support & Queries
- Identity Verification
- Custom Reports
- Barcode Systems
- Sales & Marketing Tool



OUTCOME

- SKERP manages the sales and complete billing of exports that goes to more than 50+ countries
- Per year the software manages to process the data related to 3 Lakh + slabs produced in the production line
- Created the new digital ecosystem in all departments and entire operations both within and outside the enterprise



Thank You